

QuickTime Installation Instructions

Macintosh OS X

Prepared for the use by the UW Health Center - Department of Pediatrics
Instructions last modified on July 17, 2002.



Table of Contents

Step 1: Open the QuickTime 5 System Preferences	2
Step 2: Configure the QuickTime 5 Plug-in Settings	3
Step 3: Register QuickTime 5	4
Step 4: Select Connection Speed	5

Step 1: Open the QuickTime 5 System Preferences

QuickTime is pre-installed on all versions of Macintosh OS X.

Click on the System Preferences icon located in the Dock to begin configuring QuickTime.



Figure 1 System Preferences icon

The System Preferences are displayed.

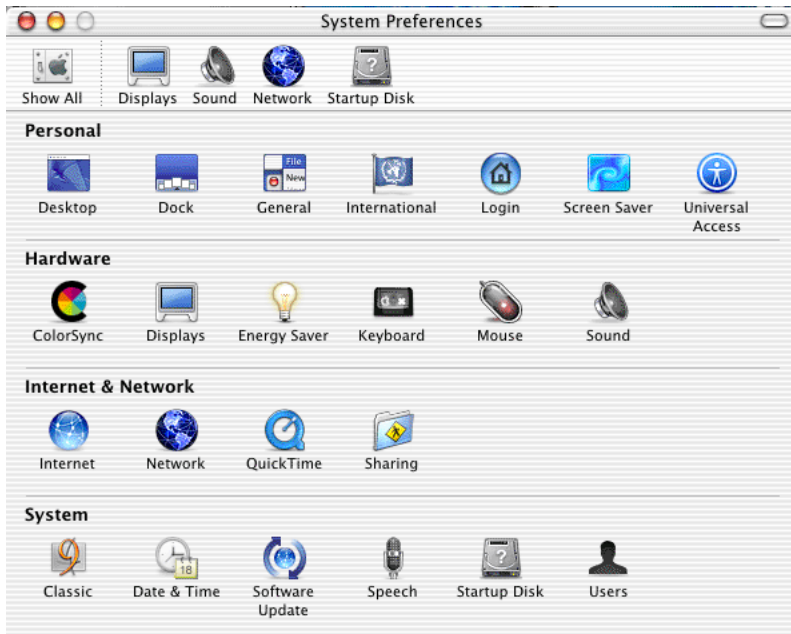


Figure 2 System Preferences window

Select the QuickTime icon under the Internet & Network section.



Figure 3 QuickTime icon

Step 2: Configure the QuickTime 5 Plug-in Settings

After selecting the QuickTime icon, the main QuickTime configuration window will appear.



Figure 4 Main QuickTime window

Playing movies automatically is recommended for Pediatrics Streaming Grand Rounds.

You can also change the files that the QuickTime plug-in handles by clicking on the MIME Settings button.

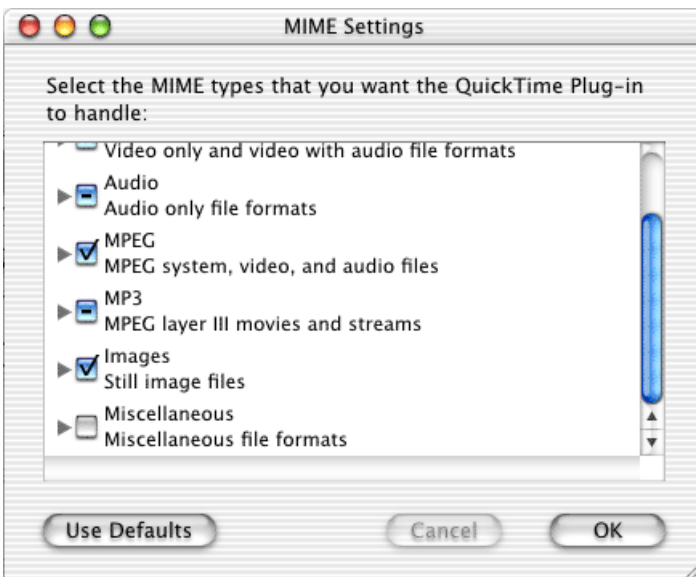


Figure 5 MIME Settings window

If you are unsure about file types and their associations and how each type interacts with QuickTime, select Use Defaults or contact your network or systems administrator.

Step 3: Register QuickTime 5

If you have a QuickTime registration number, clicking the Registration button will bring up the Registration window. Click the Edit Registration Button to modify the registration information.

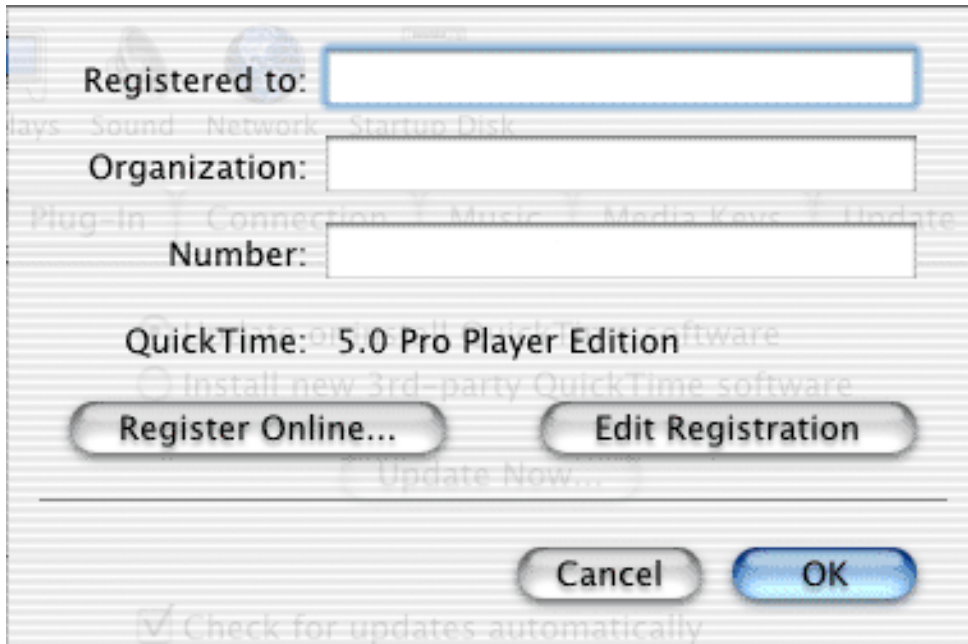


Figure 6 QuickTime Pro Registration window

Important: The registration window will contain information if you have previously registered QuickTime Pro on your computer.

This step can be skipped if no registration number is owned. Pro features are not available in unregistered copies of QuickTime. QuickTime 3/4 registration numbers will not work for QuickTime 5.

Step 4: Select Connection Speed

The next tab is the Connection tab. This window allows you to select what type of Internet connection you have. Make a selection that matches your connection speed. If a selection does not match your connection speed exactly, select the slower option that is closest to your connection speed.

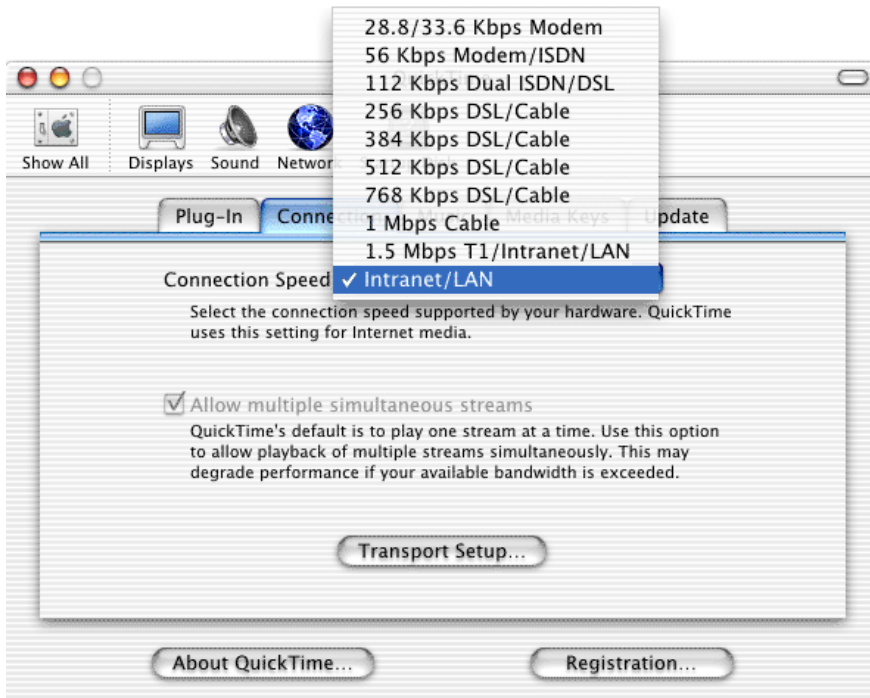


Figure 7 QuickTime Connection Tab

If you need to use a proxy connection to the Internet, click on the Transport Setup button. Select the option for “Use HTTP Proxy” and enter the address of the Proxy Server. Otherwise, leave these settings as they currently are configured.

If you are unsure of these settings, please contact your network or systems administrator. You may change these settings at any time, using the QuickTime Control Panel.

Note: Pediatrics Streaming Grand Rounds does not require a HTTP Proxy setting.

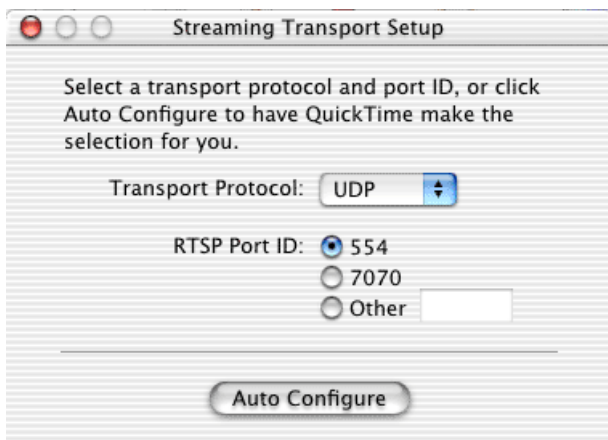


Figure 8 Web Proxy and Server window

This completes the QuickTime configuration for MacOS X (in the area of streaming video). If you are having problems reaching the Pediatrics Streaming Grand Rounds, please send the following information to help@mail.pediatrics.wisc.edu (after contacting your local IT staff):

- 1) Your name and contact information
- 2) The location from where you are having connections problems
- 3) The platform you are using (WinTel or Macintosh)
- 4) The Operating System (OS) you are using:

Windows: 95, 98, NT, ME, 2000, XP

Macintosh: 7.5.5, 8.x, 9.x, X.x

- 5) The method of connection (dial-up, cable modem, DSL, LAN, etc...)